



SD300 START/STOP ANALOGUE SPEED CONFIGURATION



Document SD300-2

Jason Curtis- Support Engineer
Power Electronics NZ Ltd
16TH October 2020
jcurtis@power-electronics.co.nz

Contents

Contents 1

Parameters 2

Connection Diagram 3

Terminal Numbers 4

Display Navigation 4

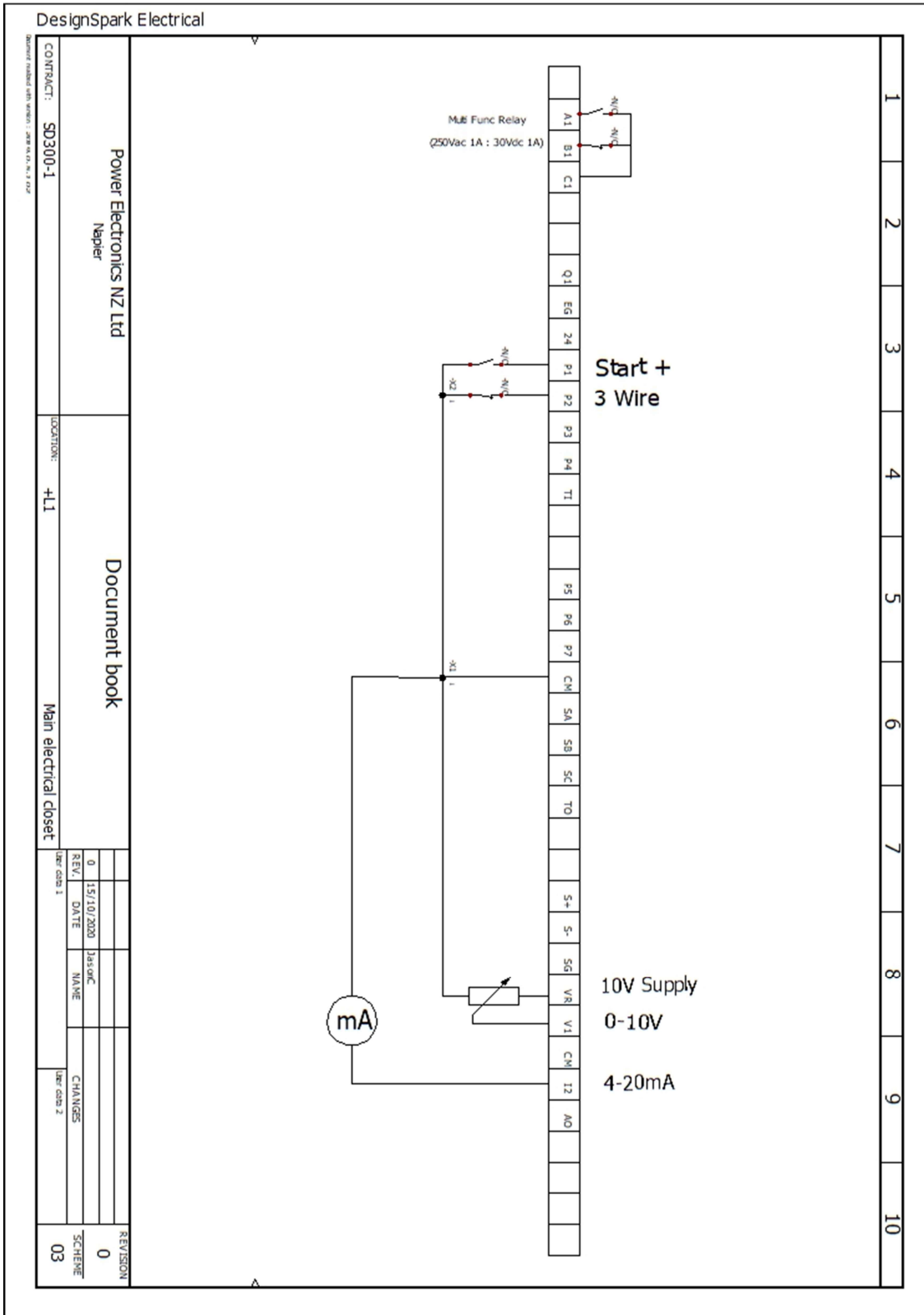


Parameters

PARAMETER	DEFAULT	DESCRIPTION	SET VALUE
ROOT MENU			
ACC	20.0sec	Acceleration Time	Adjust accordingly
dEC	30.0sec	Deceleration Time	Adjust accordingly
Drv	1	Drive Mode	1:Start/stop by terminals FX-forward or Rx- reverse
Frq	0	Frequency Mode	2:V1(0-10V) or 5:I2 (4-20mA)
FUNCTION GROUPS (dr/Ad/bA)			
dr-14	xx	Motor power setting	xxkW Set required kW rating
dr-15	0	Torque boost select	0:Man torque 1:Auto torque
dr-20	50.00	Max Speed Limit	Adjust accordingly
Ad-24	0	Frequency limits select	0:No (Limits established by max.freq and start freq) 1: YES (Limits established by Hi and Low freq limits)
bA-11	4	Number of motor poles	4:1500rpm (set accordingly)
bA-13	xx	Motor rated current	xx Amps Set required current motor nameplate
bA-15	xx	Motor rated voltage	xx Volts Set required motor voltage nameplate
I/O GROUP (In)			
0-10Volt Analogue			
In-1	50.00	Analog Max Freq Input	Operating Maximum of analogue input
In-8	0V	Minimum voltage V1	0V (Adjust min voltage as necessary)
In-9	0.00%	Min frequency for V1	0.00% (Adjust min freq as required)
In-10	10.0V	Max voltage of V1	10V (Adjust max voltage as necessary)
In-11	100.00%	Max frequency for V1	100.00% (Adjust max freq as required)
0-20mA Analogue			
In-53	4.0mA	Minimum current of I2	4.0mA (Adjust min current accordingly)
In-54	0.00%	Min frequency for I2	0.00% (Adjust min transducer range as required)
In-55	20.0mA	Maximum current of I2	20.0mA Adjust max current accordingly)
In-56	100.0%	Max frequency for I2	100.0% (Adjust max transducer range as required)
Digital Inputs			
In-65	1	Config Input P1	1: (FX Forward Run Command)
In-66	2	Config Input P2	Set to 14: 3 Wire (N/C Stop Circuit)

denotes minimum necessary adjustments.

Connection Diagram



Terminal Numbers

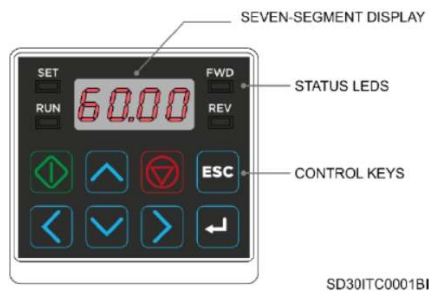
Terminals CM / P1 : Common/Start+ (NO contact)
 Terminals CM / P2 : Common/Stop (NC Contact)
 Terminals CM/VR/V1 : Common/10V/0-10V
 Terminals CM/I2 : Common/4-20mA signal

Start Button
 Stop Button
 0-10V Potentiometer
 4-20mA Generated

NOTE: the remote I/O control cables must be screened

Display Navigation

SD300 variable drives have a built-in seven segment display which provides intuitive data presentation, an easy navigation through the control parameters and allows storing thousands of user-customized configurations.



It has four indicator leds that supply information about the drive operational status, plus eight control keys. They are described in the table below:

KEY / LED	NAME	FUNCTION
	RUN key	Run command.
	STOP/RESET key	STOP: Stop command during operation. RESET: Reset command when a fault occurs.
	UP key	Used both to scroll up through the parameters of a group and to increase a parameter value.

KEY / LED	NAME	FUNCTION
	DOWN key	Used both to scroll down through the parameters of a group and to decrease a parameter value.
	Left key	Used to jump to other parameter groups or move the cursor to the left.
	Right key	Used to jump to other parameter groups or move the cursor to the right.
	Enter key	Used to set a parameter value or to save the changed parameter value.
	Escape key	Used to cancel the changes or to switch from Remote/Local if this option was previously configured.
	Forward Run	Illuminated during forward run. LEDS flicker when a fault occurs.
	Reverse Run	Illuminated during reverse run.
	Run	Illuminated during operation / Flickering during acceleration/deceleration.
	Setting	Illuminated during parameter setting / Flickering when the ESC key is operating as a multi-key.