



SD750 START/STOP ANALOGUE SPEED CONFIGURATION



Document SD750-2

Jason Curtis- Support Engineer
Power Electronics NZ Ltd
16TH October 2020
jcurtis@power-electronics.co.nz

Contents

Contents 1

Parameters 2

Connection Diagram 3

Terminal Numbers 4

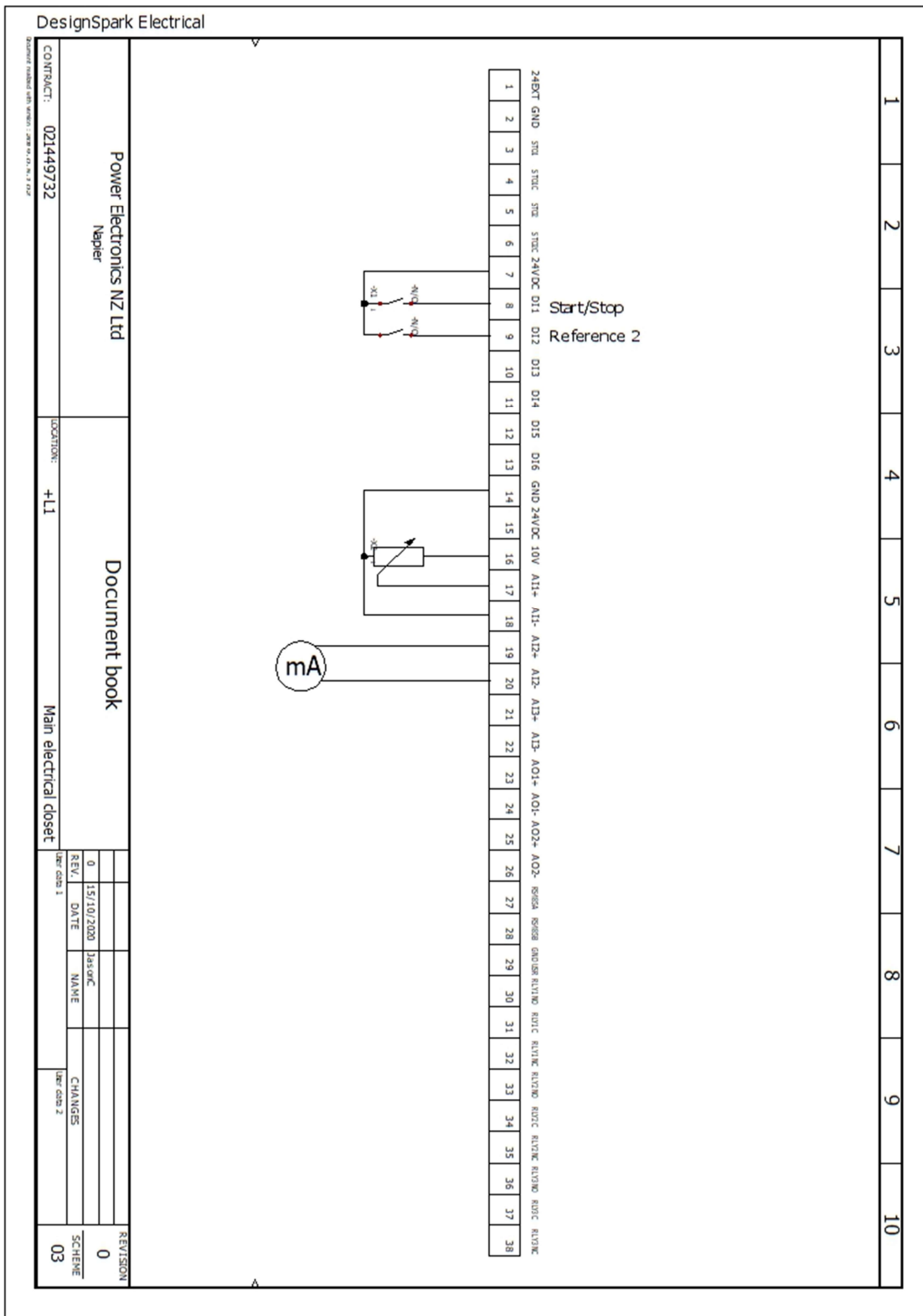
Display Navigation- Tips 4



Parameters

| SCREEN | DESCRIPTION | VALUE (DEFAULT) |
|---------------------------------|------------------------------|--|
| G1: OPTIONS | | |
| 5 | Programme | (Standard) |
| G2: NAMEPLATE | | |
| 1 | Motor rated current | A (* model dependent) Enter motor FLC |
| 2 | Motor rated voltage | (400V) Enter motor VOLTAGE |
| 3 | Motor power | kW (* model dependent) Enter motor kW |
| 4 | Motor speed | (1485) Enter motor RPM |
| 5 | Motor power factor | (0.85) Enter motor p.f |
| 6 | Motor frequency | (50Hz) Enter motor FREQUENCY |
| 7 | Motor cooling | (63%) |
| G3: REFERENCES | | |
| 1 | Speed Ref 1 Source | (Local) Set to AI1 |
| 2 | Speed Ref 2 Source | (AI1) set to AI2 |
| G4: INPUTS - | | |
| Subgroup G4.1: Digital Inputs | | |
| 1 | Main Control Mode | (Local) Set to Remote |
| 5 | Digital Input 1 | (Start/Stop) No Change |
| 6 | Digital Input 2 | (Reference 2) No Change |
| Subgroup G4.2: Analogue Input 1 | | |
| 1 | Selection of pressure sensor | (N) No Change |
| 3 | Analogue input format | (V) 0-10V No Change |
| 4 | AI1 Low Level | (+0.0V) set to minimum signal level V |
| 6 | AI1 High Level | (+10.0V) set to maximum signal level V |
| 8 | AI1 Ref Speed Minimum | (+0.0%) set to minimum percentage value of motor speed |
| 9 | AI1 Ref Speed Maximum | (+100.0%) set to maximum percentage value of motor speed |
| Subgroup G4.3: Analogue Input 2 | | |
| 1 | Selection of pressure sensor | (N) No Change |
| 3 | Analogue input format | (mA) 4-20mA No Change |
| 4 | AI2 Low Level | (+4.0mA) set to minimum signal level mA |
| 6 | AI2 High Level | (+20.0mA) set to maximum signal level mA |
| 8 | AI2 Ref Speed Minimum | (+0.0%) set to minimum percentage value of motor speed |
| 9 | AI2 Ref Speed Maximum | (+100.0%) set to maximum percentage value of motor speed |
| G5: RATES ACC/DEC | | |
| Subgroup G5.1: Acceleration | | |
| 1.1 | Acceleration rate | (3%/s) adjust accordingly |
| Subgroup G5.2: Deceleration | | |
| 2.1 | Deceleration rate | (3%/s) adjust accordingly |
| G10: LIMITS | | |
| Subgroup G10.: Speed | | |
| 1.1 | Minimum speed limit | (+0.00%) adjust to suit motor |
| 1.2 | Maximum speed limit | (+100%) adjust to suit motor |
| 1.7 | Motor reverse inhibit | (N) set to Y to prevent reverse operation |
| Subgroup G10.2: Current/Torque | | |
| 2.1 | Current limit | A (* model dependent) adjust to suit |

Connection Diagram

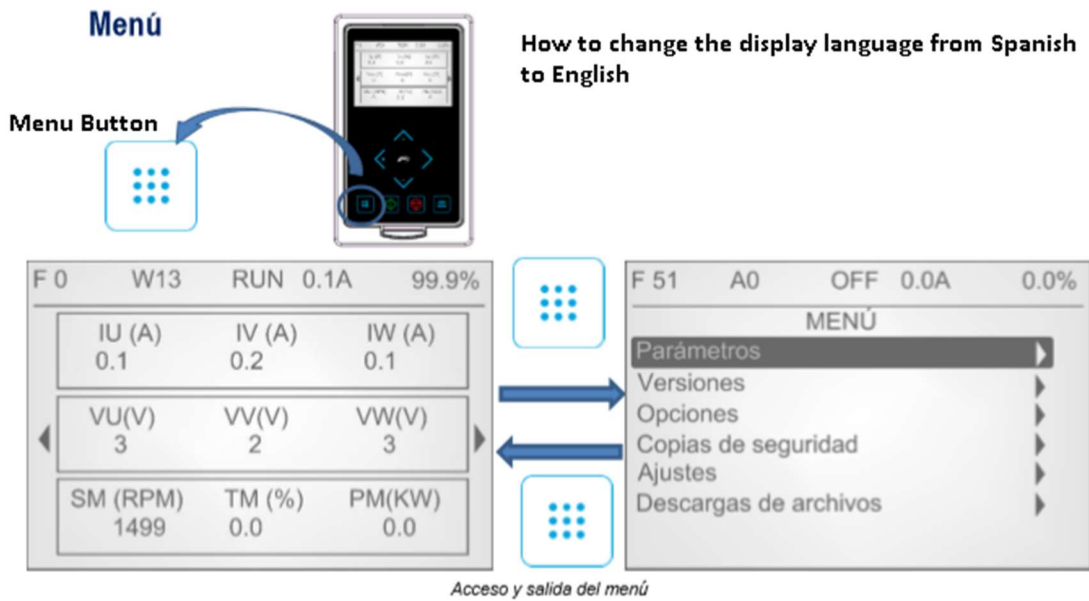


Terminal Numbers

- Terminals 7 / 8 : 24VDC/ DI1 Start/Stop (NO contact)
- Terminals 7 / 9 : 24VDC/ DI2 Reference 2 (NO contact)
- Terminals 14/16/17/18 : GND/10V/AI1+/AI1- Analogue input1 (0-10V Potentiometer)
- Terminals 19/20 : AI2+ and AI2- Analogue input (4-20mA Generated Scada/PLC)

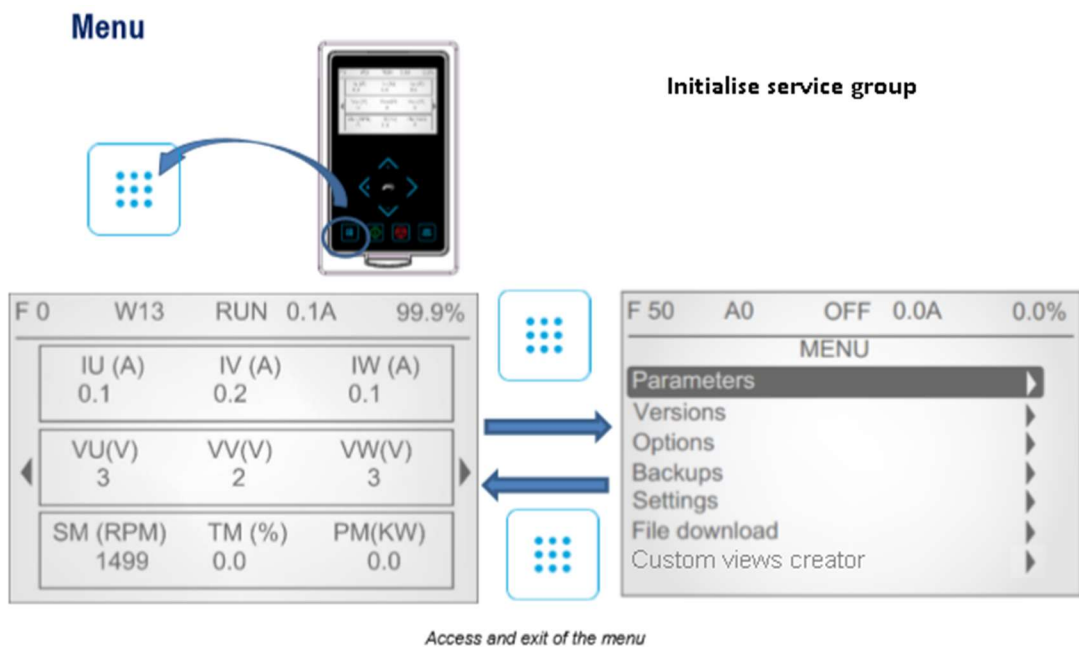
NOTE: the remote I/O control cables must be screened

Display Navigation- Tips



- Press the Menu button to show **MENU** screen.
- Arrow down to **Ajustes**
- Right Arrow into **AJUSTES** screen
- Arrow down to Idioma: **Espanol**
- Right Arrow into **IDIOMA** screen
- Up Arrow to **English**
- Right Arrow to enter and return to **SETTINGS**





Press the Menu button to show **MENU** screen.

Right arrow into Parameters

Configuration -->

Group 1: Options -->

Arrow down to G1.6 Service group password -->

Enter 700 -->

Press Menu button twice to return to the menu screen

Parameters -->

Service Group -->

Group SG1: Service -->

Arrow down to SG1.6 Init service group -->

Change to Yes -->